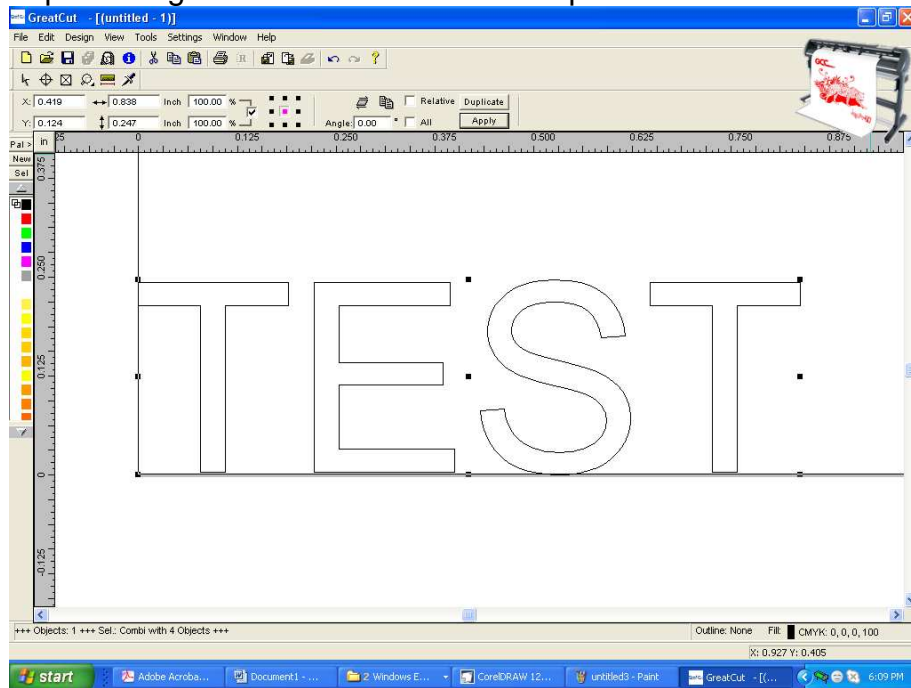
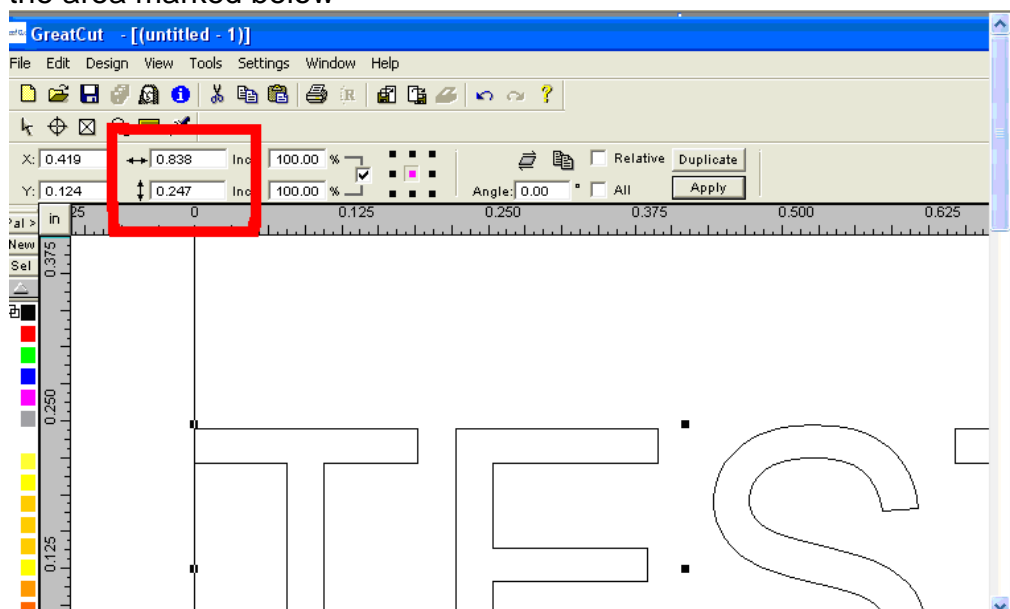


# Getting Started

Import design file to Great Cut : File>Import

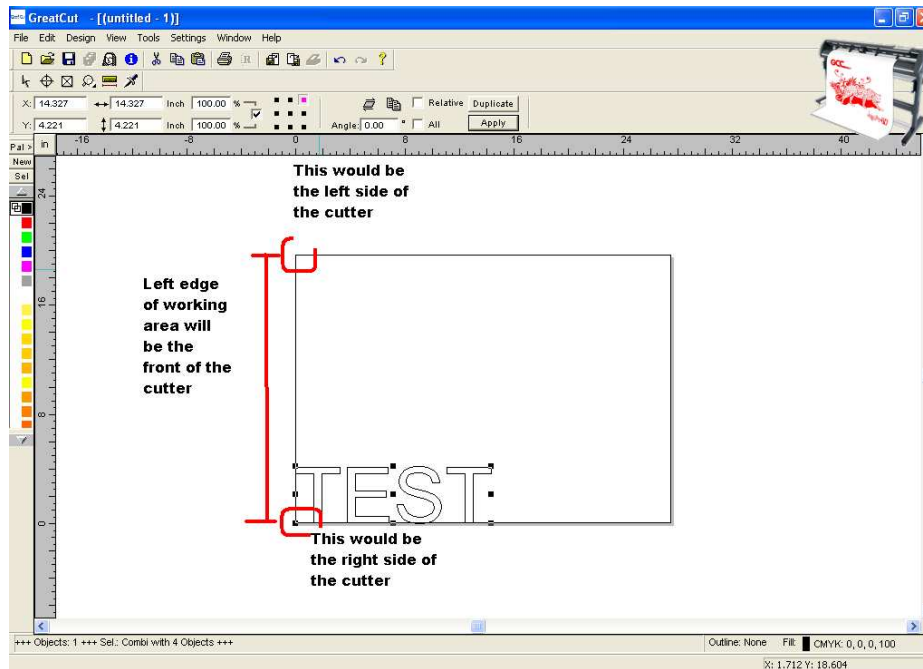


Once design is in the Great Cut working area there are options to resize by grabbing a corner and stretching it out or by inputting specific measurements in the area marked below

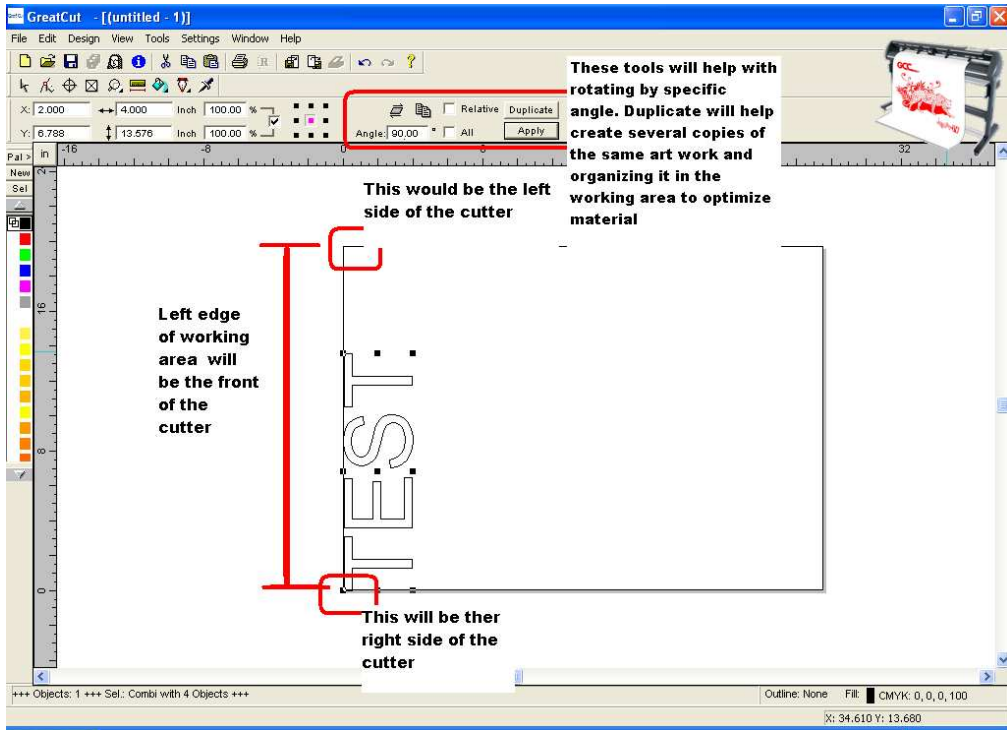


Once desired size has been set you will need to rotate design so that it's set to cut on either the length of the material on your cutter, or on the width of the material set in your cutter.

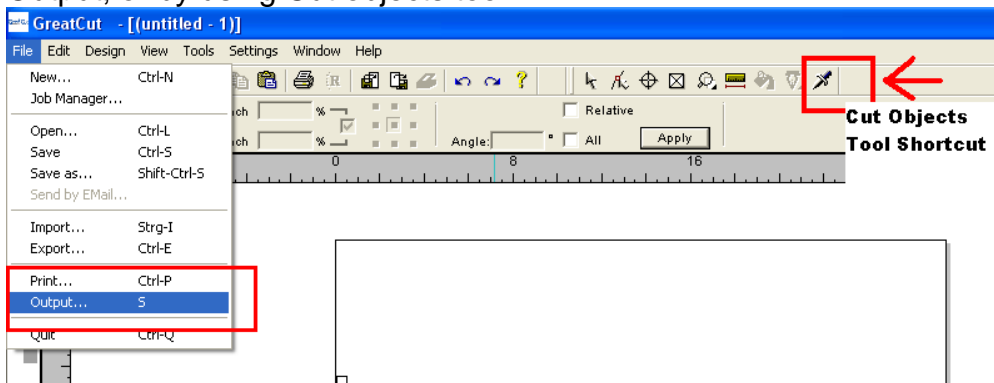
Example: The Word TEST will cut along the length of the material when sent to cut



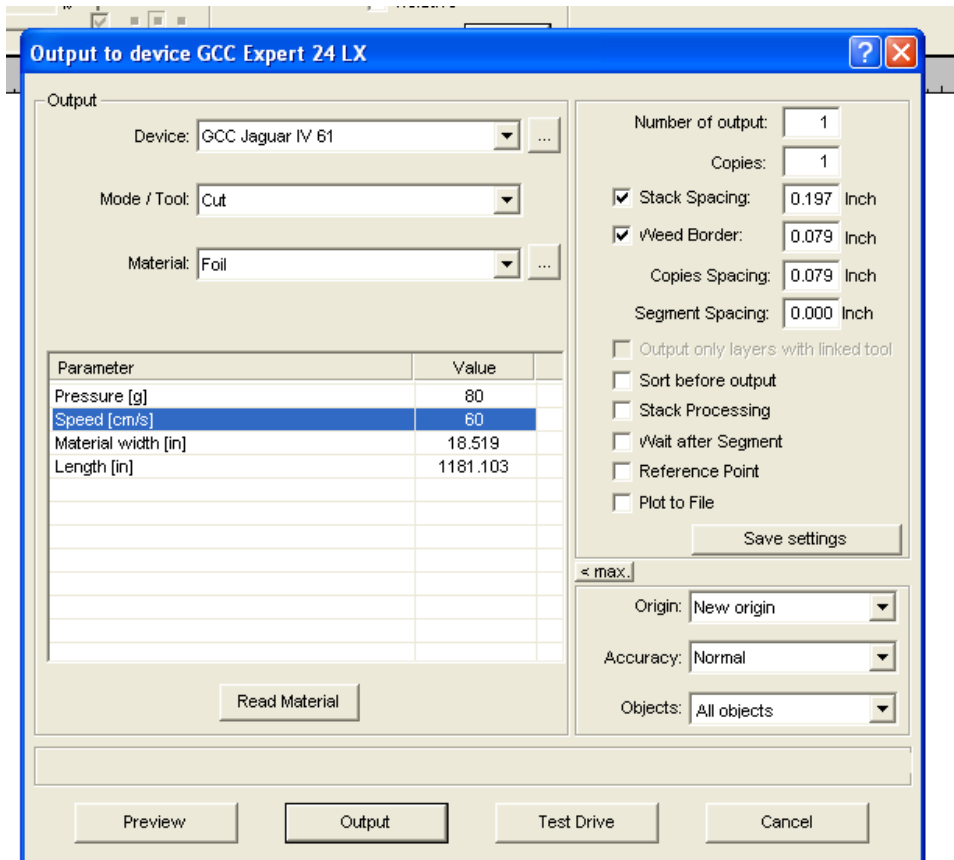
Example: The Word TEST will cut along the width of the material when sent to cut



Once orientation desired is chosen proceed to out put by going to file menu, Output; or by using Cut objects tool



Next you will have your out put to device window



On output window you can set speed and pressure values. Click on Read material to retrieve the measurements that machine picked up will sizing material so that software can determine if design being sent to cut will fit on area available. Set number of copies (can multiply design within greatcut main page or from output to device window).

Click Preview to show a layout of how it will cut out, or click output to sent job to cut.