

## Output Directly from CorelDraw

Open up CorelDraw

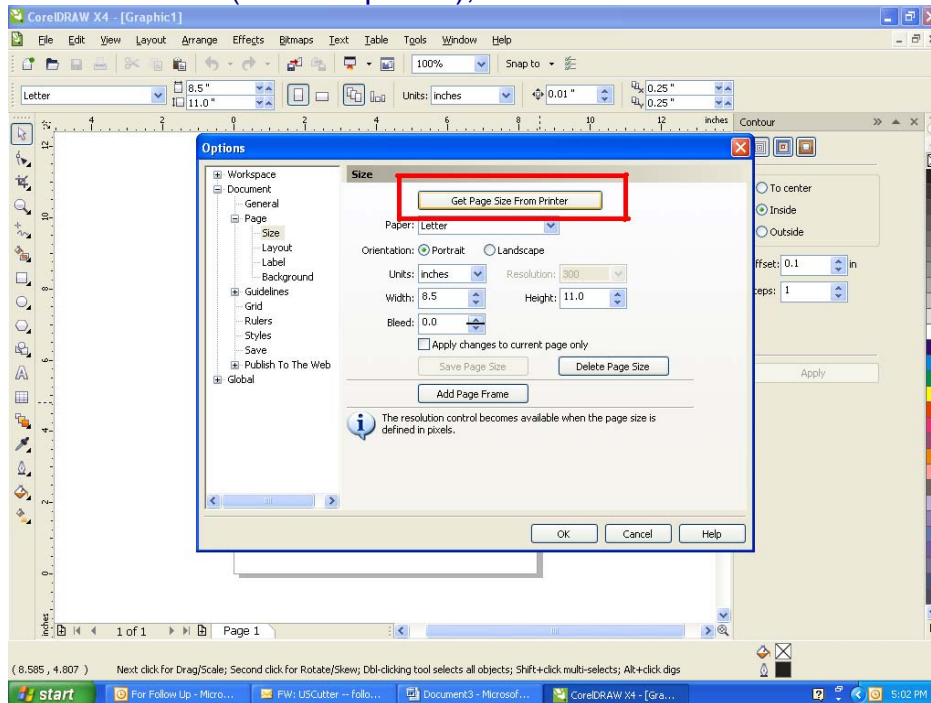
Open a new document

Go to file and print set up

From list of printers available you will select (Your cutter Model) and click OK

Click on layout menu, and page set up

Click on button (set from printer), and click on OK



You will go through designing or creating your letters, shapes, ect.....

Once you have finished designing you want to place your work to the bottom left corner of your CorelDraw page (0,0) point

Select all of your art work and you will push F12 on your keyboard (short cut key for outline settings)

Width will need to be set to .001, and the box to the right will need to be set to millimeters (.001 will not be on drop down options you will need to type it in your self)

Click OK this outline setting will be applied to everything selected. If outline setting is not set correct or not set at all your file will go through to the machine but machine will not detect cut able objects.

To print out to the machine go to File and print

In print window you will see button for properties

Under properties you will have the options to increase cutting speed, and down force pressure

If no changes are needed under properties click print to out put to cutter.